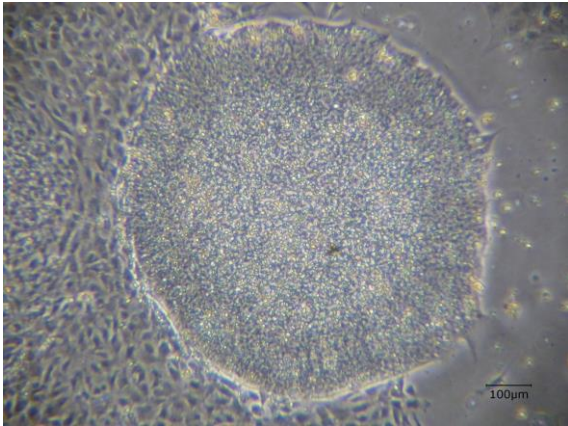
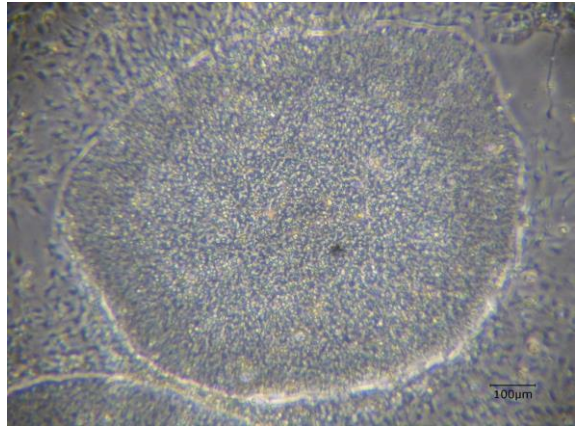


## 【 CiRA-j-1122 】 Morphology of iPSC colonies

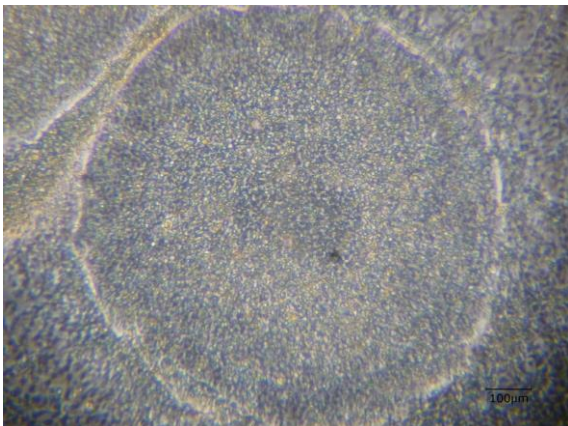
CiRA-j-1122-A: passage-3



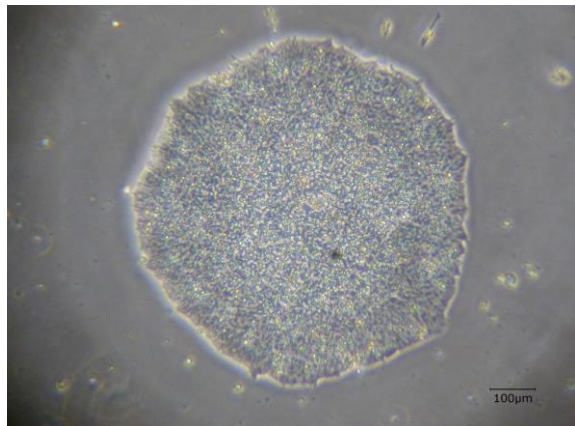
CiRA-j-1122-B: passage-3



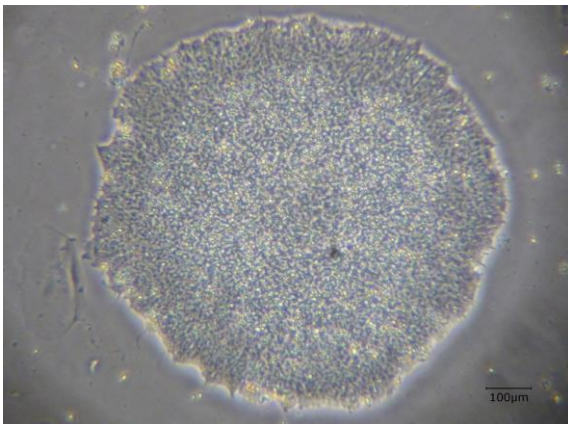
CiRA-j-1122-C: passage-3



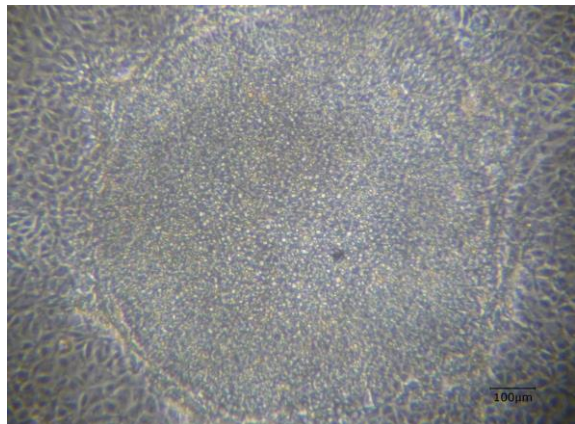
CiRA-j-1122-D: passage-3



CiRA-j-1122-E: passage-3



CiRA-j-1122-F: passage-3



( All images were captured at 4x magnification )